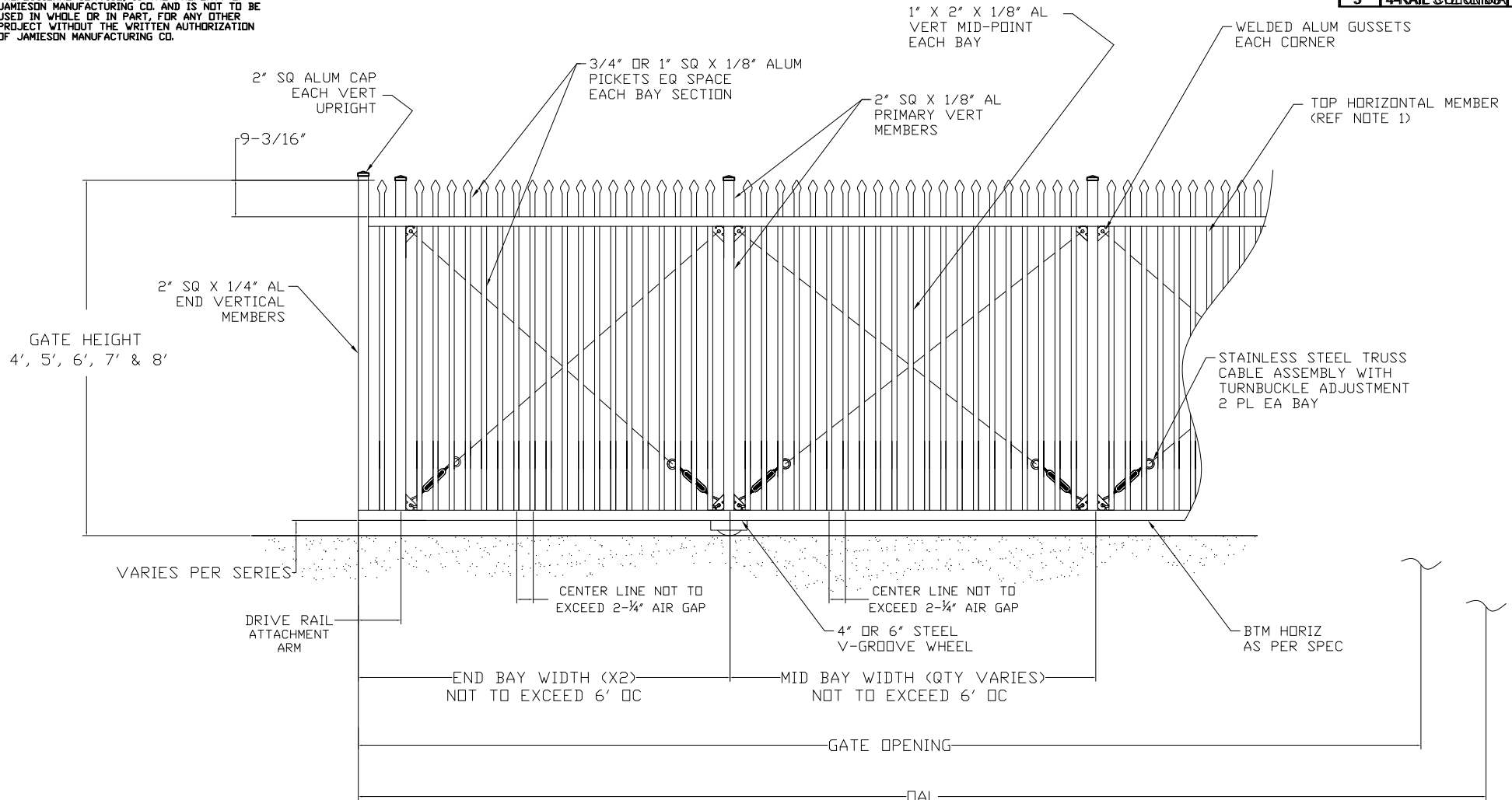


**OWNERSHIP OF DOCUMENTS:**

THIS DOCUMENT AND THE IDEAS AND DESIGNS INCORPORATED HEREIN, AS AN INSTRUMENT OF PROFESSIONAL SERVICE, IS THE PROPERTY OF JAMIESON MANUFACTURING CO. AND IS NOT TO BE USED IN WHOLE OR IN PART, FOR ANY OTHER PROJECT WITHOUT THE WRITTEN AUTHORIZATION OF JAMIESON MANUFACTURING CO.

ORNAMENTAL GATE DRAWINGS SUPPLEMENT PAGE 1 OF VALUTRAC™ SERIES 2500, 3500 & 4500 V-TRACK SLIDING GATE

LEGEND		
SHT	DESCRIPTION	LAYER
1	2-RAIL SCRIMMGA	S2
2	3-RAIL SCRIMMGA	S3
3	4-RAIL SCRIMMGA	S4



- NOTE:**
- 1) REFERENCE APPLICABLE SERIES DRAWINGS FOR STRUCTURAL FRAME MATERIAL DETAIL (NOT AVAILABLE ON SERIES 1500)
  - 2) FILLER MATERIAL TO COVER ENTIRE LENGTH OF GATE FRAME, INCLUDING TAIL SECTION
  - 3) ALL PICKET SPACING TO BE COMPLIANT TO ASTM F2200-02
  - 4) PICKET SPACING TO BE EQUIDISTANT WITHIN EACH BAY

CUSTOMER GATE CRITERIA- PLEASE REF DWG T3000 OR TD3000: PAGE 2, TABLE 1				
NOM HEIGHT (H1)	NOM HEIGHT (H2)	GATE OPENING	TRUCK PDST SPACING	OVERALL GATE LENGTH



**JAMIESON MANUFACTURING CO.**  
 4221 PLATINUM WAY, DALLAS, TX 75237  
 PH: (713) 434-7907 / (888) 286-3362  
 email: gates@jamiesonfence.com www.jamiesonfence.com

VALUTRAC™ ORNAMENTAL SLIDE GATES  
**STERLING 2-RAIL ORNAMENTAL GATE DETAIL**

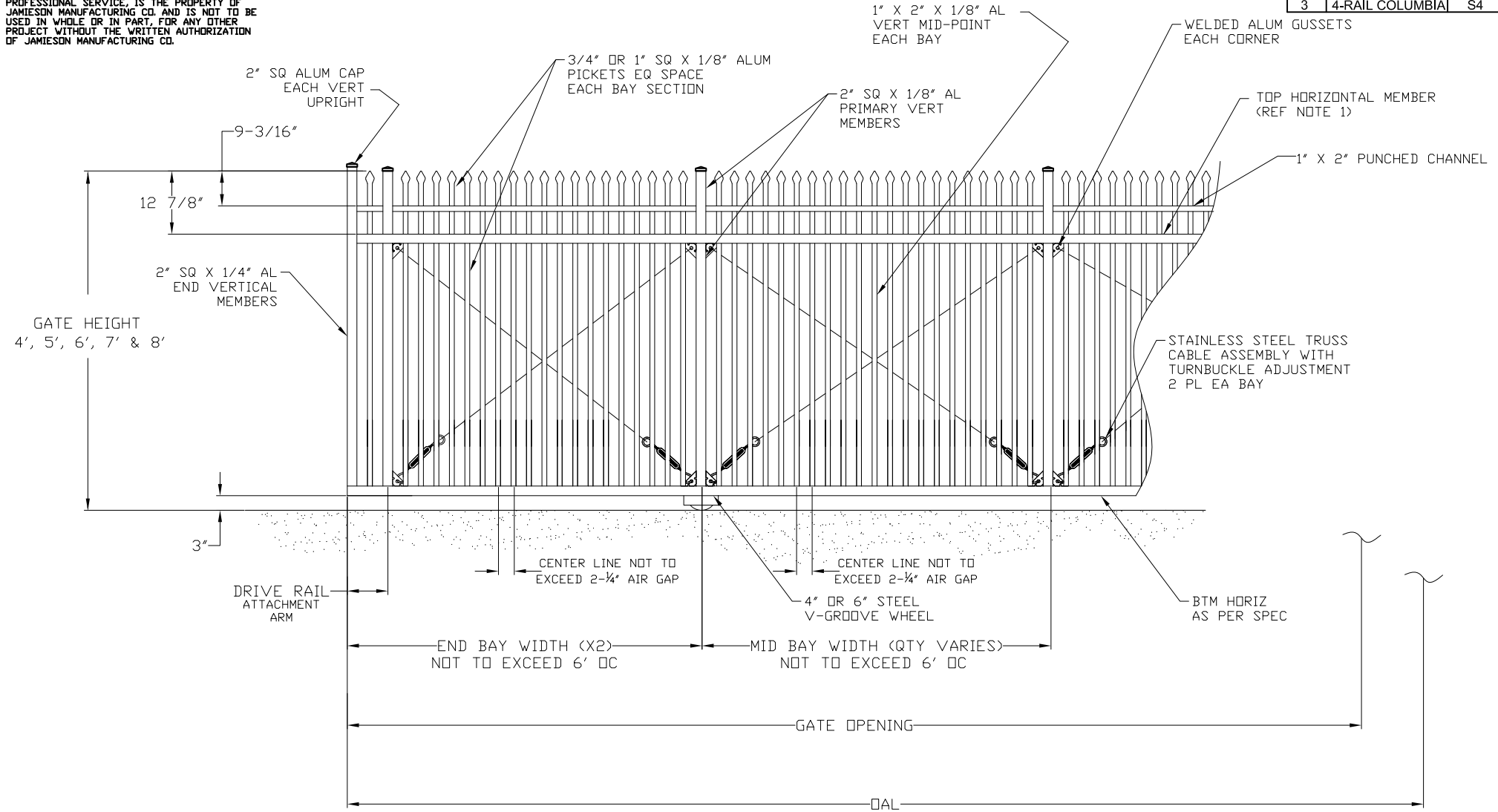
DESIGNED BY JK	DWG NO. VT Sterling_D
CHECKED JK	
DRAWN JH	
DATE: 01/21/2010	REV. A
SCALE: N/A	SHEET 1 OF 3

**OWNERSHIP OF DOCUMENTS:**

THIS DOCUMENT AND THE IDEAS AND DESIGNS INCORPORATED HEREIN, AS AN INSTRUMENT OF PROFESSIONAL SERVICE, IS THE PROPERTY OF JAMIESON MANUFACTURING CO. AND IS NOT TO BE USED IN WHOLE OR IN PART, FOR ANY OTHER PROJECT WITHOUT THE WRITTEN AUTHORIZATION OF JAMIESON MANUFACTURING CO.

ORNAMENTAL GATE DRAWINGS SUPPLEMENT PAGE 1 OF VALUTRAC™ SERIES 2500, 3500 & 4500 V-TRACK SLIDING GATE

LEGEND		
SHT	DESCRIPTION	LAYER
1	2-RAIL COLUMBIA	S2
2	3-RAIL COLUMBIA	S3
3	4-RAIL COLUMBIA	S4



- NOTE:**
- 1) REFERENCE APPLICABLE SERIES DRAWINGS FOR STRUCTURAL FRAME MATERIAL DETAIL (NOT AVAILABLE ON SERIES 1500)
  - 2) FILLER MATERIAL TO COVER ENTIRE LENGTH OF GATE FRAME, INCLUDING TAIL SECTION
  - 3) ALL PICKET SPACING TO BE COMPLIANT TO ASTM F2200-02
  - 4) PICKET SPACING TO BE EQUIDISTANT WITHIN EACH BAY

CUSTOMER GATE CRITERIA- PLEASE REF DWG T3000 OR TD3000; PAGE 2, TABLE 1				
NOM HEIGHT (H1)	NOM HEIGHT (H2)	GATE OPENING	TRUCK PDST SPACING	OVERALL GATE LENGTH



**JAMIESON MANUFACTURING CO.**  
 4221 PLATINUM WAY, DALLAS, TX 75237  
 PH: (713) 434-7907 / (888) 286-3362  
 email: gates@jamiesonfence.com www.jamiesonfence.com

**VALUTRAC™ ORNAMENTAL SLIDE GATES**  
**STERLING 3-RAIL**  
**ORNAMENTAL GATE DETAIL**

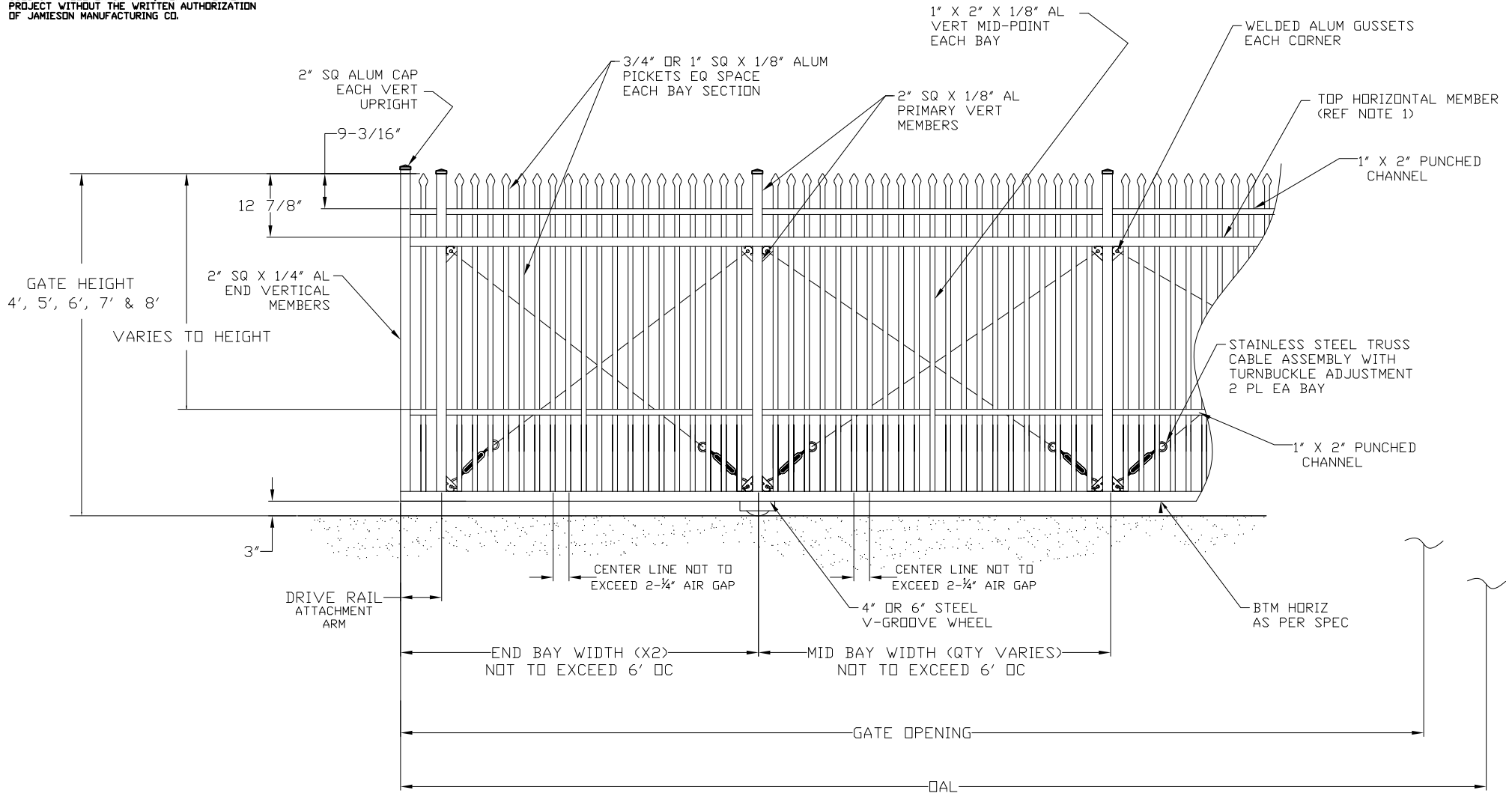
DESIGNED BY JK	DWG NO. VT Sterling_D
CHECKED JK	
DRAWN JH	REV. A
DATE: 01/21/2010	SHEET 2 OF 3
SCALE: N/A	

**OWNERSHIP OF DOCUMENTS:**

THIS DOCUMENT AND THE IDEAS AND DESIGNS INCORPORATED HEREIN, AS AN INSTRUMENT OF PROFESSIONAL SERVICE, IS THE PROPERTY OF JAMIESON MANUFACTURING CO. AND IS NOT TO BE USED IN WHOLE OR IN PART, FOR ANY OTHER PROJECT WITHOUT THE WRITTEN AUTHORIZATION OF JAMIESON MANUFACTURING CO.

ORNAMENTAL GATE DRAWINGS SUPPLEMENT PAGE 1 OF VALUTRAC™ SERIES 2500, 3500 & 4500 V-TRACK SLIDING GATE

LEGEND		
SHT	DESCRIPTION	LAYER
1	2-RAIL COLUMBIA	S2
2	3-RAIL COLUMBIA	S3
3	4-RAIL COLUMBIA	S4



- NOTE:**
- 1) REFERENCE APPLICABLE SERIES DRAWINGS FOR STRUCTURAL FRAME MATERIAL DETAIL (NOT AVAILABLE ON SERIES 1500)
  - 2) FILLER MATERIAL TO COVER ENTIRE LENGTH OF GATE FRAME, INCLUDING TAIL SECTION
  - 3) ALL PICKET SPACING TO BE COMPLIANT TO ASTM F2200-02
  - 4) PICKET SPACING TO BE EQUIDISTANT WITHIN EACH BAY

CUSTOMER GATE CRITERIA- PLEASE REF DWG T3000 OR TD3000; PAGE 2, TABLE 1				
NOM HEIGHT (H1)	NOM HEIGHT (H2)	GATE OPENING	TRUCK PDST SPACING	OVERALL GATE LENGTH



**JAMIESON MANUFACTURING CO.**  
 4221 PLATINUM WAY, DALLAS, TX 75237  
 PH: (713) 434-7907 / (888) 286-3362  
 email: gates@jamiesonfence.com www.jamiesonfence.com

**VALUTRAC™ ORNAMENTAL SLIDE GATES**  
**STERLING 4-RAIL**  
**ORNAMENTAL GATE DETAIL**

DESIGNED BY JK	DWG NO. VT Sterling_D
CHECKED JK	
DRAWN JH	REV. A
DATE: 01/21/2010	SHEET 3 OF 3
SCALE: N/A	