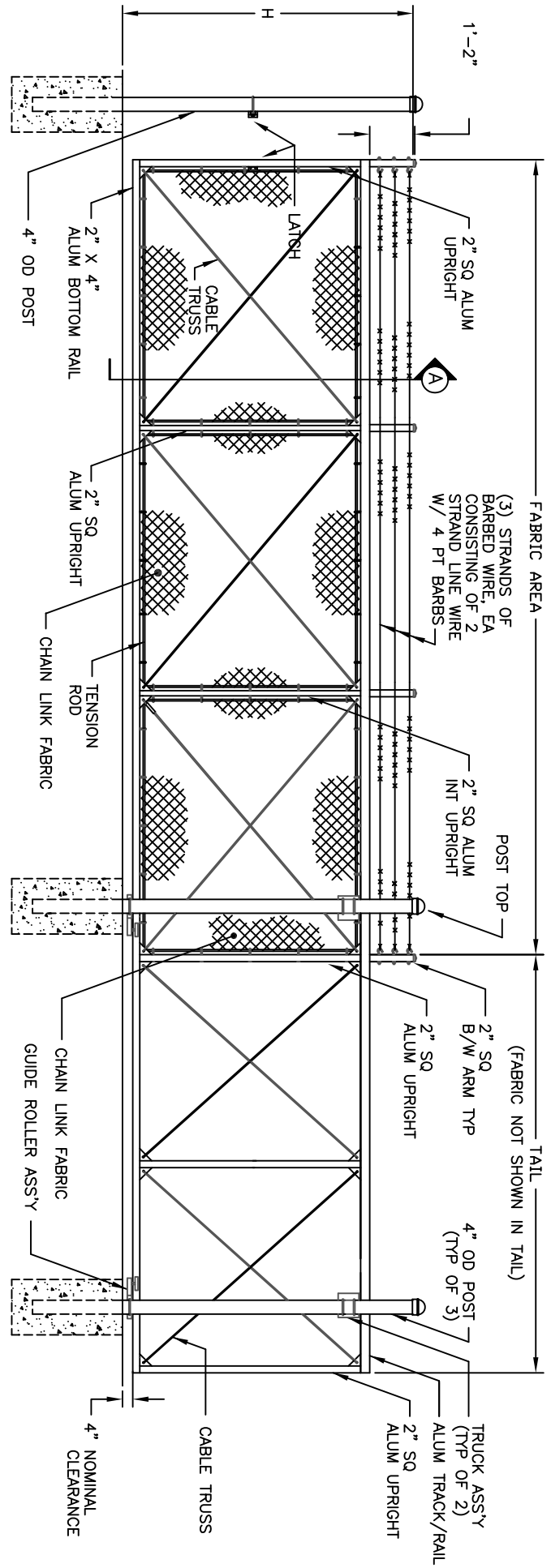


GATE PLAN



GATE ELEVATION - (3) BAYS SHOWN
SEE SHEET #2 FOR SECTIONS & DETAILS

- NOTES:
1. FOOTING WIDTH TO BE (4)X POST WIDTH. MIN DEPTH TO BE 36".
 2. GATES MAY BE MANUALLY OR ELECTRICALLY OPERATED.

NOM HEIGHT (H)
6'-0"
7'-0"
8'-0"
10'-0"
12'-0"
OPENING
6'-0" THROUGH
30'-0"

MASTER HALCO
A Tradition of Fencing Solutions

SurTrac™ CANTILEVERED GATES
BY MASTER HALCO, INC. IRVING, TX
PHONE 800-729-0580
WWW.MASTERHALCO.COM

SurTrac™ ALUMINUM CANTILEVERED SLIDE GATE
ROUND POSTS, W/ BARBED WIRE

DWG: MH - STS - 2.0
BY: TPA
DATE: 08 - 19 - 11