

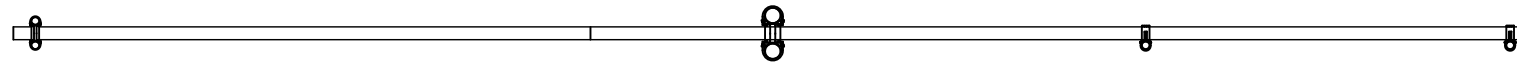
2

1

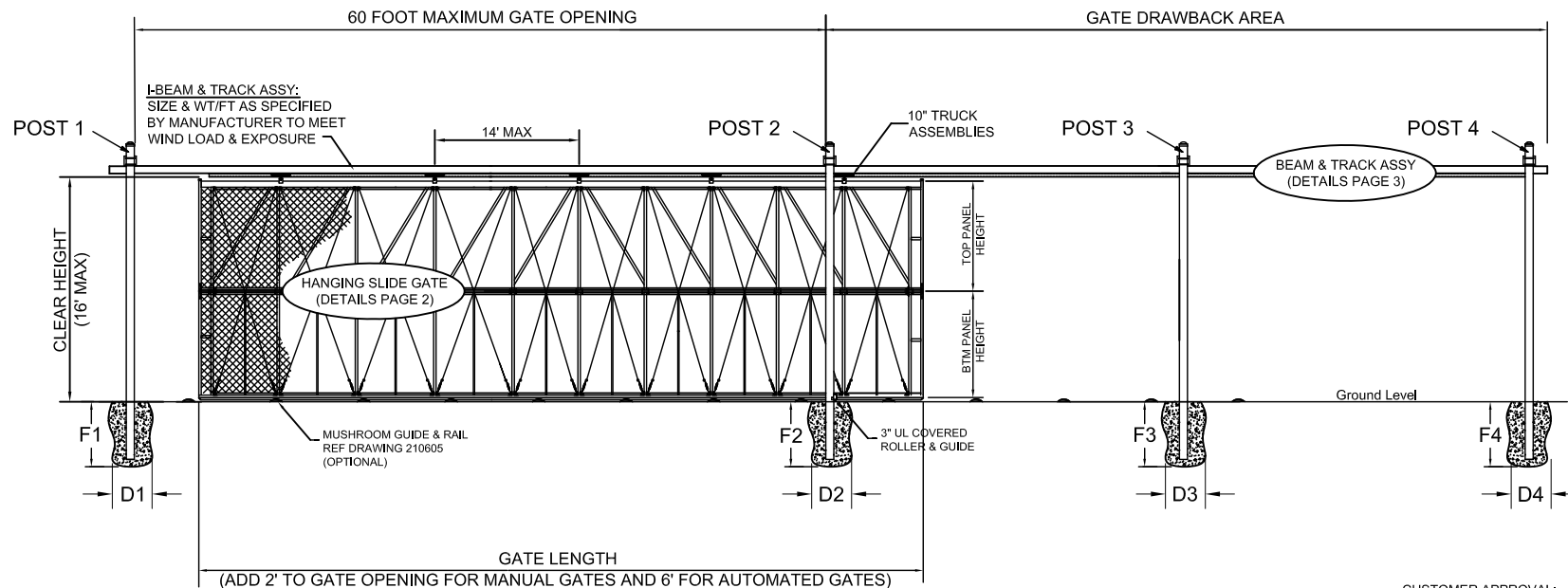
OWNERSHIP OF DOCUMENTS:

THIS DOCUMENT AND THE IDEAS AND DESIGNS INCORPORATED HEREIN, AS AN INSTRUMENT OF PROFESSIONAL SERVICE, IS THE PROPERTY OF JAMIESON MANUFACTURING CO. AND IS NOT TO BE USED IN WHOLE OR IN PART, FOR ANY OTHER PROJECT WITHOUT THE WRITTEN AUTHORIZATION OF JAMIESON MANUFACTURING CO.

GATE SPECIFICATION & DESIGN TO [90] [110] MPH @ WIND EXPOSURE "C"



PLAN VIEW



ELEVATION VIEW

CUSTOMER APPROVAL: _____

DATE: _____

TO PLACE ORDER PLEASE COMPLETE THE TABLE BELOW:

CUSTOMER GATE CRITERIA (REF PG 3 FOR POST OPTIONS)				
CLEAR HEIGHT	TOP PANEL HT	BTM PANEL HT	GATE OPENING	GATE LENGTH

- NOTES:**
1. ALL MATERIALS AS PER WRITTEN SPECIFICATIONS
 2. REF SHEET 2 FOR SLIDING GATE DETAILS (FILLER FULL HT); SHEET 2A FOR FILLER PARTIAL HT.
 3. REF SHEET 3 FOR I-BEAM & POST SIZE, POST SPACING & FOOTING DIAMETERS & DEPTHS
 4. ALL STEEL FRAMEWORK &/OR HARDWARE TO BE GALVANIZED PER ASTM F1083-97
 5. FILLER MATERIAL FULL LENGTH SO GATES CAN HANG ON EITHER SIDE OF GATE OPENING & OPEN IN EITHER DIRECTION.
 6. STANDARD FILLER MATERIAL IS 2" KK X 9 GAGE X 1.2 OZ GAW CHAIN LINK. ALTERNATIVE CHAIN LINK & ORNAMENTAL FILLER MATERIALS AVAILABLE.
 7. SPECIFICATIONS SHOWN CAN BE CHANGED BY THE MANUFACTURER ONLY.
 8. POWDER COATING AVAILABLE

LEGEND		
SHT	DESCRIPTION	LAYER
1	ELEVATION OVERVIEW	SHT 1
2	GATE ELEV / ALUM FULL HEIGHT	SHT 2A
3	POST / I-BEAM ELEV / ISO VIEWS	SHT 3

DRAWN	J KETTERER	12/08/08
CHECKED		
APPROVED		
SHEET	1 OF 3	

JAMIESON MANUFACTURING CO.
 4221 PLATINUM WAY, DALLAS, TX 75237
 PH: (713) 434-7907 / (888) 286-3362
 email: gates@jamiesonfence.com www.jamiesonfence.com

TITLE
 I-Trac Series 6600
 UNDER BEAM ALUMINUM STACKED GATES
 HEAVY INDUSTRIAL & SECURITY CONSTRUCTION
 FOR CLEAR HEIGHT UP TO 16' TALL & OPENINGS TO 60'
 CHAIN LINK OPTION

SIZE A **SCALE** **DWG NO** IT6600 D **REV** C

2

1

2

1

B

B

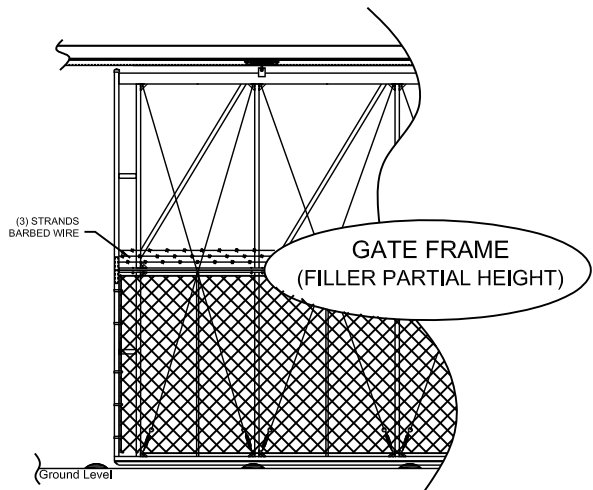
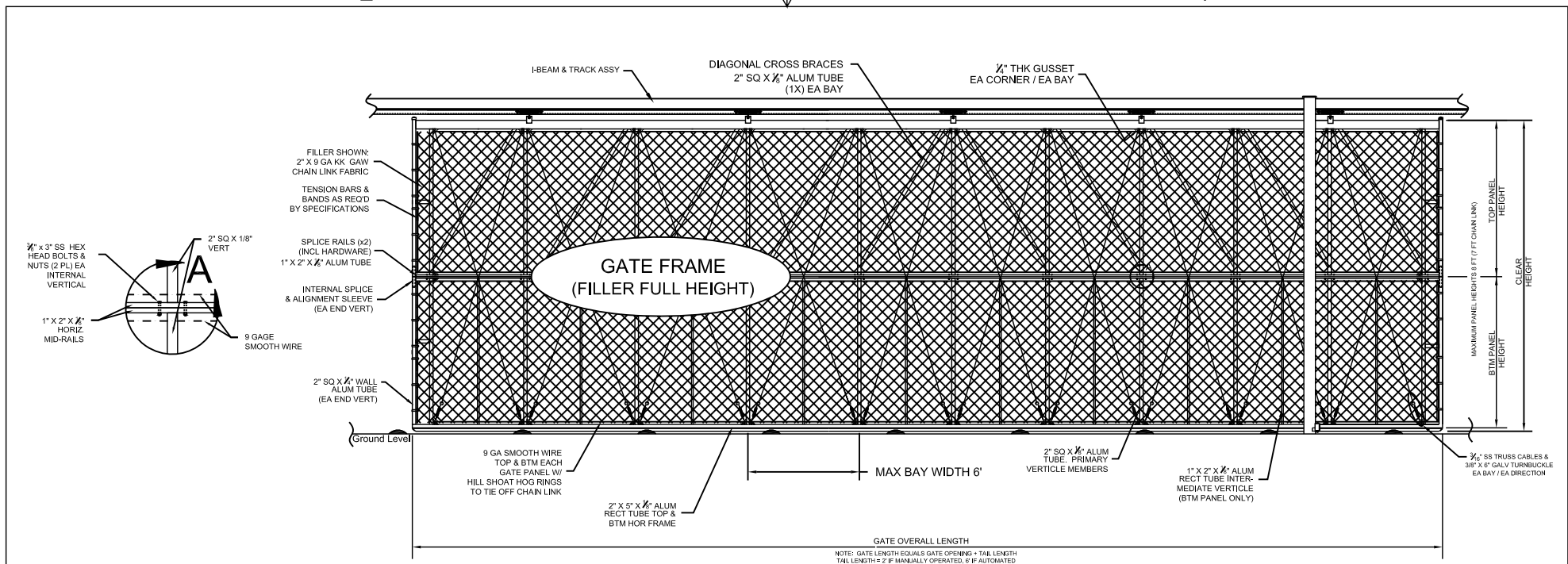


A

A

2

1



NOTE: GATES SHIP COMPLETE & ASSEMBLED
MID-SPLICE RAILS UN-BOLTED & GATES FOLDED
OVER FOR TRANSPORTATION. ALL HARDWARE
PROVIDED FOR EASE OF ASSY AT JOB SITE.

- NOTES:**
1. FRAME MATERIAL GRADE AS PER WRITTEN SPECIFICATIONS
 2. ALL MATERIAL SHOWN SHALL BE NEW ALUMINUM UNLESS OTHERWISE NOTED.
 3. REF SHEET 3 FOR BEAM & TRACK DETAIL
 4. REF SHEET 4 FOR POST DETAIL & SELECTION
 5. STANDARD FILLER MATERIAL IS 2" KK X 9 GAGE X 1.2 OZ GAW CHAIN LINK. ALTERNATIVE CHAIN LINK & ORNAMENTAL FILLER MATERIALS AVAILABLE.
 6. SPECIFICATIONS SHOWN CAN BE CHANGED BY THE MANUFACTURER ONLY.
 7. POWDER COATING AVAILABLE

CUSTOMER APPROVAL: _____
DATE: _____

J KETTERER 12/08/08

JAMIESON MANUFACTURING CO.
4221 PLATINUM WAY, DALLAS, TX 75237
PH: (713) 434-7907 / (888) 286-3362
email: gates@jamiesonfence.com www.jamiesonfence.com

LEGEND		
SHT	DESCRIPTION	LAYER
1	ELEVATION OVERVIEW	SHT 1
2	GATE ELEV / ALUM FULL HEIGHT	SHT 2A
3	POST / I-BEAM ELEV / ISO VIEWS	SHT 3



I-Trac Series 6600
UNDER BEAM ALUMINUM STACKED GATES
HEAVY INDUSTRIAL & SECURITY CONSTRUCTION
FOR CLEAR HEIGHT UP TO 16' TALL & OPENINGS TO 60'
CHAIN LINK OPTION

OWNERSHIP OF DOCUMENTS:

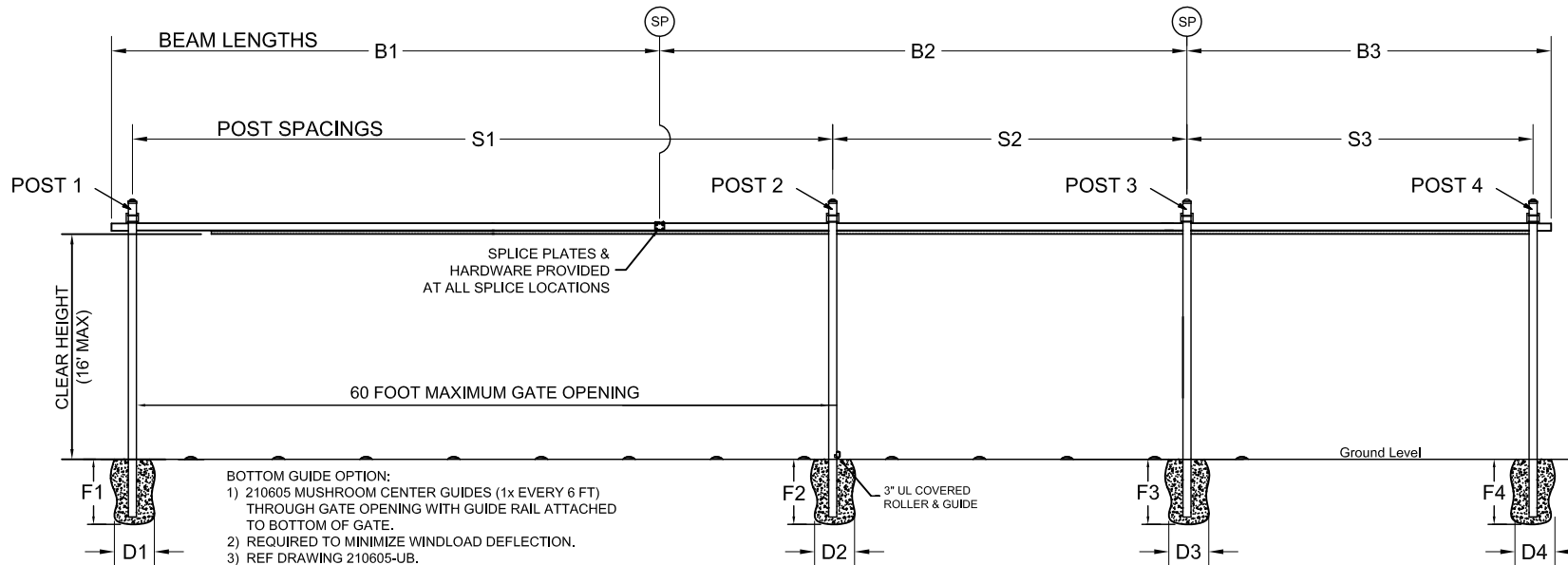
THIS DOCUMENT AND THE IDEAS AND DESIGNS INCORPORATED HEREIN, AS AN INSTRUMENT OF PROFESSIONAL SERVICE, IS THE PROPERTY OF JAMIESON MANUFACTURING CO. AND IS NOT TO BE USED IN WHOLE OR IN PART, FOR ANY OTHER PROJECT WITHOUT THE WRITTEN AUTHORIZATION OF JAMIESON MANUFACTURING CO.

BEAM SPECIFICATIONS				
I-BEAM		LENGTHS		
SIZE	WEIGHT	B1	B2	B3

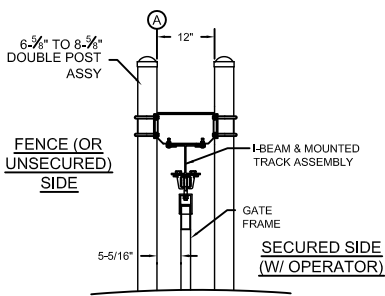
NOTE: SP DENOTES I-BEAM SPLICE LOCATIONS (ALL SPLICE PLATES & HARDWARE PROVIDED)

WIND SPEED (MPH)	FILLER HEIGHT	POST & FOOTING DETAIL											
		POST 1 - LATCH POST			POST 2 - FRONT GATE POST			POST 3 - MIDDLE GATE POST			POST 3 - MIDDLE GATE POST		
		FOOTING		POST SPACING	FOOTING		POST SPACING	FOOTING		POST SPACING	FOOTING		POST SPACING
		SIZE & TYPE	DEPTH	DIAMETER	SIZE & TYPE	DEPTH	DIAMETER	SIZE & TYPE	DEPTH	DIAMETER	SIZE & TYPE	DEPTH	DIAMETER
		'F1'	'D1'	'S1'	'F2'	'D2'	'S2'	'F3'	'D3'	'S3'	'F4'	'D4'	

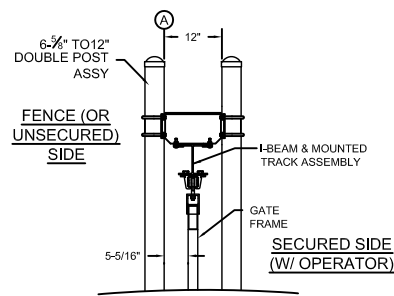
NOTE:
 1) ALL POST WEIGHT IS SCHEDULE 40
 2) POST, I-BEAM AND ASSOCIATED HARDWARE ARE GALVANIZED AS PER ASTM F1483



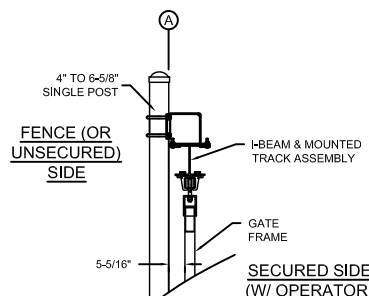
BOTTOM GUIDE OPTION:
 1) 210605 MUSHROOM CENTER GUIDES (1x EVERY 6 FT) THROUGH GATE OPENING WITH GUIDE RAIL ATTACHED TO BOTTOM OF GATE.
 2) REQUIRED TO MINIMIZE WINDLOAD DEFLECTION.
 3) REF DRAWING 210605-UB.



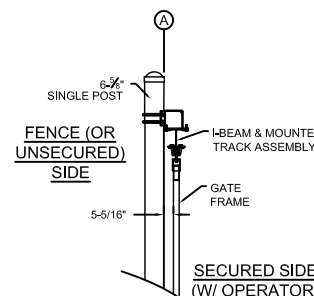
POST1
LATCH POST:



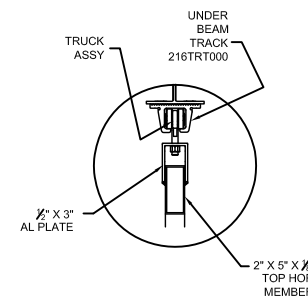
POST2
FRONT GATE POST:



POST3
MIDDLE GATE POST:



POST4
BACK GATE POST:



END VIEW

NOTE:
 1) ACTUAL SIZES OF POSTS AND I-BEAMS BASED ON WIND VELOCITY, EXPOSURE LEVELS & GATE FILLER HEIGHT. CONTACT MANUFACTURER FOR REQUIREMENT.
 2) ALL STEEL GALVANIZED AS PER ASTM F1483
 3) ALIGN INSIDE FACE (A) OF ALL POSTS

CUSTOMER APPROVAL: _____
 DATE: _____

LEGEND		
SHT	DESCRIPTION	LAYER
1	ELEVATION OVERVIEW	SHT 1
2	GATE ELEV / ALUM FULL HEIGHT	SHT 2A
3	POST / I-BEAM ELEV / ISO VIEWS	SHT 3



DRAWN J KETTERER	12/08/08	JAMIESON MANUFACTURING CO. 4221 PLATINUM WAY, DALLAS, TX 75237 PH: (713) 434-7907 / (888) 286-3362 email: gates@jamiesonfence.com www.jamiesonfence.com
CHECKED		
APPROVED		TITLE I-Trac Series 6600 UNDER BEAM ALUMINUM STACKED GATES HEAVY INDUSTRIAL & SECURITY CONSTRUCTION FOR CLEAR HEIGHT UP TO 16' TALL & OPENINGS TO 60' CHAIN LINK OPTION
SHEET 3 OF 3	SCALE A	DWG NO IT6600 D
		REV C