

RESIDENTIAL • COMMERCIAL

# **AUTOMATIC** **GATE OPENERS**



SECURITY • SAFETY • DURABILITY

# AGS 900

## RESIDENTIAL *Sliding Gate Operator*

### ENGINEERING

Fully enclosed continuous duty motor with permanently lubricated double reduction gear box gives silent and continuous operation. Handles up to 20 foot openings and gates weighing up to 375 pounds. Engineered for use on up to ten residential family homes.

Reliable rotary limits on output shaft ensure accurate open and closed gate positions.

Has electronic braking system that will never wear out. Self-locking in both the open and closed positions.

Soft start/stop protection for mechanical parts is provided by our fully pre-wired solid state control system.

Post mount installation is standard. (Posts included)

### STRUCTURAL INTEGRITY

Has 3/16 inch steel frame with attractive baked-on powder coated finish.

### SAFETY

- Internal safety device as well as stop input terminals.
- Internal safety senses an obstruction at least 50% more effectively than AC current sensing devices and friction clutches.
- Adjustable obstruction sensing in both the opening and closing directions. When an obstruction is sensed in the opening or closing direction the operator will stop when equipped with the standard capability control board. When ordered with optional full systems control board the AGS 900 will automatically reverse the gate to the open position when an obstruction is sensed while the gate is closing.
- Stop input terminals which can be used for pedestrian doors or as a simple safety input device.
- In an emergency, such as loss of power, the gate can be pushed open manually after just turning a key.

### AVAILABLE OPTIONS

- Low Voltage Battery powered operation version with Remote Charger: Eliminates the need and expense of running 115 volt AC power to operator location. The AGS 900 can be ordered with low voltage outdoor cable and plug in charger to supply power for battery operation of the AGS 900. Battery operation typically allows up to 100 cycles of operation per day. If power should go out the AGS 900 will continue operating with available power in its battery back up system. Low voltage outdoor cable can be run a distance of up to 800 ft in order to supply power for battery operation of the AGS 900.
- Solar Panel Package. Solar operation typically allows up to 15 cycles of operation per day under good sunny conditions. Larger solar capacity packages are available upon request.
- Full System Capability control board, includes automatic closing timer, visual feedback indicator lights and also has master and slave operation capability. Plus many more features.
- Surge Suppression: Used for lightning protection.
- Concrete Pad Mounting Stand: Can be used if the gate operator must be anchored to a concrete surface or pad.
- Heater with thermostat for extremely cold weather.

### ELECTRICAL SPECIFICATIONS

115 Volts AC input or optional 12 Volt DC (for low voltage battery operated and solar versions), 12 Volt DC controls. 12 volt DC is available at terminals for radio receiver. 115 Volt AC power to operator can be run in 12 gauge wire up to 1000 feet.

Listed by E.T.L., Nationally recognized testing laboratory. Also approved to U.L. and CSA standards.

### DIMENSIONS

Height 23" Length 11" Width 8"  
Shipping weight, 81 lbs.

### WARRANTY

Please see back panel.



Protected by Patent No. 5,369,913



Solar Panel



Battery Operation with Low Voltage Outdoor Cable



Concrete Pad Mounting Stand



Patent No. 5,369,913

## AGS 2000 INDUSTRIAL *Sliding Gate Operator*

### ENGINEERING

Fully enclosed, continuous duty motor with industrially rated 50 AMP motor control relays and thermal overload protection. Starting torque is equivalent to a 1 1/2 HP AC motor. Handles up to 25 foot openings and gates weighing up to 500 pounds. Engineered for residential, industrial and multi unit housing projects.

Adjustable 0-45 second hold open timer, permanently lubricated continuous duty worm gear reduction and reliable rotary limits on output shaft ensure accurate open and closed gate positions.

Has electronic braking system that will never wear out. Self locking in both the open and closed positions.

Full systems capability and soft start/stop protection for mechanical parts are provided by our fully pre-wired solid state control system.

Circuit board has visual feedback indicator lights for easy installation and service.

Can be wired as Master/Slave using standard circuit board. No special slave board is needed.

### STRUCTURAL INTEGRITY

Has 16 gauge steel cover with baked enamel textured finish and 3/16 inch steel base and frame with attractive powder coated finish. Fully weather and corrosion resistant.

### SAFETY

- Internal safety device, as well as input terminals for auxiliary safety equipment. Internal safety senses an obstruction at least 50% more effectively than AC current sensing devices and friction clutches.

- Separately adjustable obstruction sensing in both the opening and closing directions. When an obstruction is sensed in the opening direction the operator will stop. When an obstruction is sensed in the closing direction the operator automatically reverses the gate to the open position.
- Stop circuit for pedestrian doors.
- In an emergency, such as loss of power, the gate can be pushed open manually after just flipping a switch.

### AVAILABLE OPTIONS

- Emergency Battery Back Up System: Allows continued gate operation for up to 30 cycles at a lower rate of speed whenever a power failure occurs. The system will sense when battery power gets low, then will put gate into the open position. System can also be set to open the gate automatically in the event of a power failure.
- Solar Power Package: Solar operation typically allows up to 35 cycles of operation per day under good sunny conditions. Larger solar capacity packages are available upon request.
- Surge Suppression: Used for lightning protection.
- External Manual Release: Can be placed on the outside of the gate entrance.
- Steel Mounting Stand: Eliminates the need to pour a cement mounting pad.
- Heater with thermostat for extremely cold weather.

### ELECTRICAL SPECIFICATIONS

115 Volt AC input or optional 24 volt DC (for low voltage battery powered operation), 12 Volt DC controls. 12 Volt DC is available at terminals for radio receiver and auxiliary equipment. 115 Volt AC power to operator can be run in 12 gauge wire up to 500 feet.

### DIMENSIONS

Height 21" Length 12" Width 17"  
Shipping weight, 125 lbs.

### WARRANTY

*Please see back panel.*

# AGS 3000

## HEAVY DUTY INDUSTRIAL *Sliding Gate Operator*

### ENGINEERING

Continuous duty 1/2 HP motor with built-in cooling fan, industrially rated 30 AMP motor control relays and thermal overload protection. Starting torque is equivalent to a 2 1/4 HP AC motor. Handles up to 40 foot openings and gates weighing up to 1500 pounds. Engineered for multi unit housing projects and industrial use.

Adjustable 0-45 second hold open timer, permanently lubricated continuous duty worm gear reduction and reliable rotary limits on output shaft ensure accurate open and closed gate positions.

Has electronic braking system that will never wear out. Self locking in both the open and closed positions.

Full systems capability and soft start/stop protection for mechanical parts are provided by our fully pre-wired solid state control system.

Circuit board has visual feedback indicator lights for easy installation and service.

Can be wired as Master/Slave using standard circuit board.

No special slave board is needed.

### STRUCTURAL INTEGRITY

Has 16 gauge steel cover with baked enamel textured finish and 3/16 inch steel base and frame with attractive powder coated finish.

### SAFETY

- Internal safety device, as well as input terminals for auxiliary safety equipment.
- Internal safety senses an obstruction at least 50% more effectively than AC current sensing devices and friction clutches.
- Separately adjustable obstruction sensing in both the opening and closing directions. When an obstruction is sensed in the opening direction the operator will stop. When an obstruction is sensed in the closing direction the operator automatically reverses the gate to the open position.
- Stop circuit for pedestrian doors.
- In an emergency, such as loss of power, the gate can be pushed open manually after just flipping a switch.

### AVAILABLE OPTIONS

- Emergency Battery Back Up System: Allows continued gate operation for up to 20 cycles at a lower rate of speed whenever a power failure occurs. The system will sense when battery power gets low, then will put gate into the open position. System can also be set to open the gate automatically in the event of a power failure.
- Space Saver System: Allows the gate to slide open to within 5 inches of a rear wall with the operator installed at the rear of the gate.
- Surge Suppression: Used for lightning protection.
- External Manual Release: Can be placed on the outside of the gate entrance.
- Steel Mounting Stand: Eliminates the need to pour a cement mounting pad.
- Heater with thermostat for extremely cold weather.
- Audible gate movement warning siren.

### ELECTRICAL SPECIFICATIONS

115 Volt AC input, 12 Volt DC controls. 12 Volt DC is available at terminals for radio receiver and auxiliary equipment. 115 Volt AC power to operator can be run in 12 gauge wire up to 500 ft.

Listed by E.T.L., Nationally recognized testing laboratory.

Also approved to U.L. and CSA standards.

### DIMENSIONS

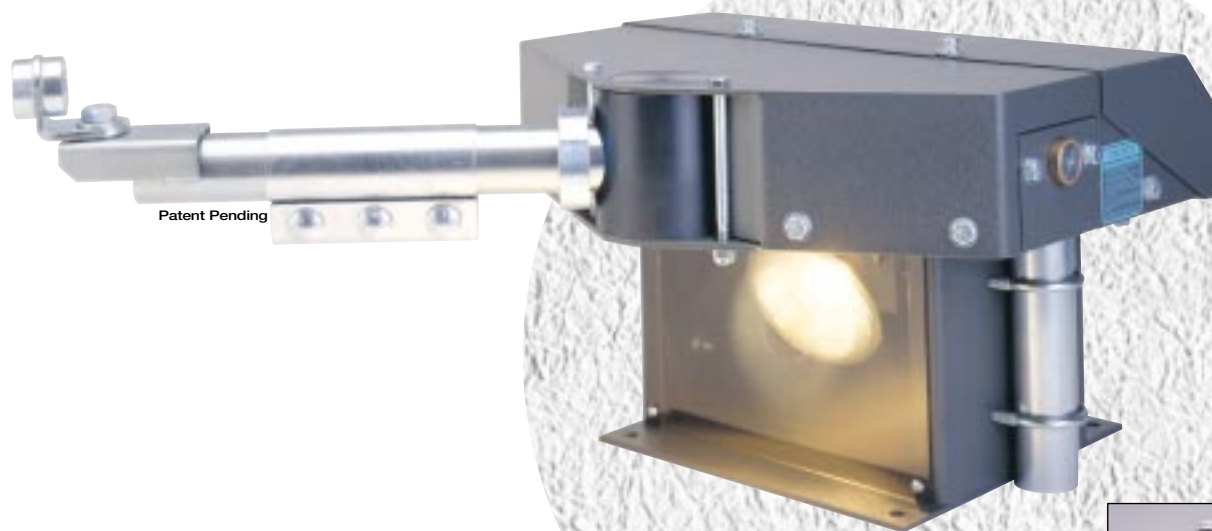
Height 21" Length 12" Width 17"  
Shipping weight, 170 lbs.

### WARRANTY

*Please see back panel.*

Patent No. 5,369,913





Manual Release Coupler



Solar Panel

# AGS 1200

## RESIDENTIAL

### Swing Gate Operator

#### ENGINEERING

Fully enclosed continuous duty motor with permanently lubricated double reduction gear box gives silent and continuous operation. Handles gates up to 14 feet in width and weighing up to 300 pounds. Engineered for use on up to four residential family homes.

Reliable rotary limits ensure accurate open and closed positions.

Has electronic braking system that will never wear out. Self-locking in both the open and closed positions.

Soft start/stop protection for mechanical parts is provided by our full pre-wired solid state control system.

The AGS 1200 base can be mounted directly to a cement pad or may be post mounted into the ground. (Posts included)

#### STRUCTURAL INTEGRITY

Has 3/16 inch steel frame with attractive baked-on powder coated finish.

#### SAFETY

- Internal safety device, as well as stop input terminals which can be used as a simple safety input device.
- Internal safety senses an obstruction at least 50% more effectively than AC current sensing devices and friction clutches.
- Adjustable obstruction sensing in both the opening and closing directions. When an obstruction is sensed in the opening or closing direction the operator will stop, when equipped with the standard capability control board. When ordered with optional full systems control board the AGS 1200 will automatically reverse the gate to the open position when an obstruction is sensed while the gate is closing.
- In an emergency, such as loss of power, the gate can be pushed open manually by releasing the coupling on operator arm.
- For additional safety and convenience, during the nighttime, the AGS 1200 lights up the driveway entrance when the gate is opened.

#### AVAILABLE OPTIONS

- Emergency Battery Back Up System: Allows continued gate operation for up to 30 cycles at a lower rate of speed whenever a power failure occurs. The system will sense when battery power gets low, then will put gate into the open position. System can also be set to open the gate automatically in the event of a power failure.
- Solar Power Package: Solar operation typically allows up to 35 cycles of operation per day under good sunny conditions. Larger solar capacity packages are available upon request.
- Full System Capability control board, includes automatic closing timer, visual feedback indicator lights and also has master and slave operation capability.
- Manual release coupler that doesn't require a tool to be disconnected and can be locked with a padlock.
- Light delay timer module.
- Heater with thermostat for extremely cold weather.

#### ELECTRICAL SPECIFICATIONS

115 Volt AC input or optional 24 Volt DC (for low voltage battery operated and solar versions, 12 Volt DC controls. 12 Volt DC is available at terminals for radio receiver. 115 Volt AC power to operator can be run in 12 gauge wire up to 500 feet.

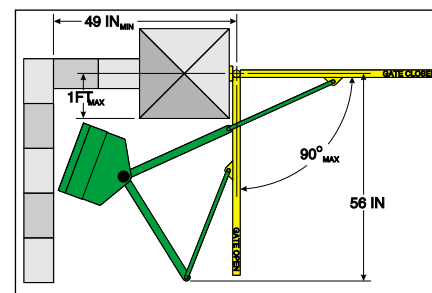
#### DIMENSIONS

Height 13"  
 Length 18"  
 Width 20"  
 Shipping weight, 120 lbs.

#### WARRANTY

Please see back panel.

Patent pending.



PLACEMENT MEASUREMENT (Standard Installation)

# AGS 106 INDUSTRIAL *Swing Gate Operator*

# AGS 105 RESIDENTIAL / LIGHT INDUSTRIAL *Swing Gate Operator*



## ENGINEERING

**AGS 106** Continuous duty 1/2 HP motor, shock mounted for silent operation with thermal overload protection. Handles gates up to 22 feet in width and weighing up to 1000 pounds. Engineered for residential, industrial and multi unit housing projects.

**AGS 105** Continuous duty 1/2 HP motor, shock mounted for silent operation with thermal overload protection. Handles gates up to 15 feet in width and weighing up to 400 pounds. Engineered for residential, industrial and multi unit housing projects.

**AGS 106 and AGS 105** Adjustable 0-45 second hold open timer, fully rated gearbox with hardened and ground worm gear for continuous duty and reliable rotary limits on output shaft ensure accurate open and closed gate positions.

Self locking in both the open and closed positions.

Full System Capability control board, includes automatic closing timer, visual feedback indicator lights and also has master and slave operation capability.

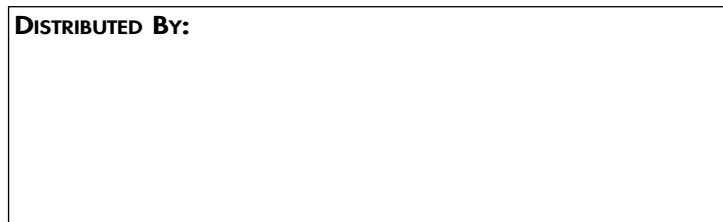
Has momentary reversing delay which will cause the operator to pause before reversing in the opposite direction.

## STRUCTURAL INTEGRITY

Has 16 gauge steel cover with baked enamel textured finish and 3/16 inch steel base and frame with attractive powder coated finish.

## ENGINEERED FOR UNEQUALED PERFORMANCE. SIMPLY, THE BEST.

DISTRIBUTED BY:



## SAFETY

- Internal safety device, as well as input terminals for auxiliary safety equipment.
- Separately adjustable obstruction sensing in both the opening and closing directions. When the obstruction is sensed in the opening direction the operator will stop. When an obstruction is sensed in the closing direction the operator automatically reverses the gate to the open position.
- Stop circuit for pedestrian doors.
- Emergency disconnect in case of power failure.
- Shadow loop input which allows a safety loop to be placed directly under the gate and allow the gate to close as soon as the car has passed.

## AVAILABLE OPTIONS

- SuperARM Emergency Quick Release: Allows quick manual release operation from the inside or the outside of the swinging gate.
- Surge suppression: Used for lightning protection.
- Steel Mounting Stand: Eliminates the need to pour a cement mounting pad.
- Heater with thermostat for extremely cold weather.

## ELECTRICAL SPECIFICATIONS

115 Volt AC input , 12 Volt DC available for radio receiver, 12 Volt DC and 24 Volt AC available for auxiliary equipment.

Listed by E.T.L., Nationally recognized testing laboratory.

Also approved to U.L. and CSA standards.

## DIMENSIONS

**AGS 106:** Height 13" Length 31" Width 16"

**AGS 105:** Height 12" Length 24" Width 13"

Shipping weight, **AGS 106:** 170 lbs, **AGS 105:** 110 lbs.

**WARRANTY** All AGS Operators have a two (2) year limited factory warranty from the date of purchase, which covers factory labor and parts against defects in workmanship and materials. Our continued success depends on your satisfaction and our pledge is to provide you with the finest finished product - quality and service.